



TARKA-SYSTEMS

is a one-stop solution for
client-specific monitoring systems

With the 10-year anniversary of TARKA-SYSTEMS special posts will be made during this year. These posts will show the capabilities of TARKA-SYSTEMS on specific categories executed over the past 10 years.

1. Special integration projects (previous post)
2. Strain gauge projects (previous post)
3. **Diving projects (this post)**
4. Sensor types

TARKA-SYSTEMS

is a one-stop solution for client-specific monitoring systems
Systems made for the dive world:

**Construction
Depth and Angle**



MOSS DIVING SYSTEM

The MOSS Diving system provides direct construction-depth readings related to NAP (other references like NN are possible).

The system includes the following parameters

- Salinity
- Atmospheric pressure

And uses three sensors

- Atmospheric pressure sensor
- Reference pressure sensor
- Depth pressure sensor at diver

With the above sensors and parameters an accuracy of **+/-1 cm** can be reached.

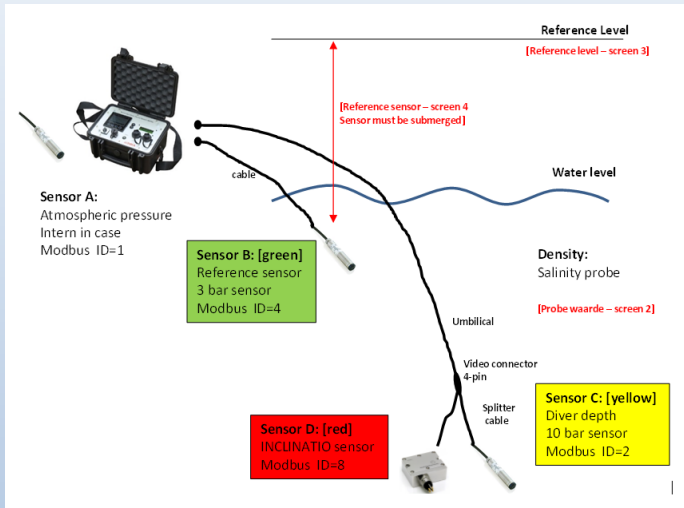
Additional to the construction-depth also an angle sensor can be used simultaneously.

Both can be connected to existing umbilical (4-core) so no additional cables are needed. All data is shown on the MOSS-display.



SYSTEM SETUP (screen numbers are related to the software on the MOSS)

MOSS DEPTH LAYOUT



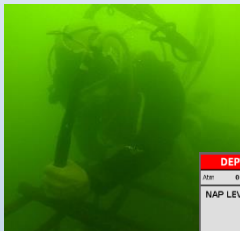
ON-SITE PICTURES



Easy and fast measurement of height and angle of anchors without extra personal in boat on surface.



MOSS unit is small and easy to add to dive-container.



DEPTH MEASUREMENT	
Ator	0
NAP	0
Abi	0
Dens	0
NAP LEVEL	
0.00	
Depth under water	0.00
1 0:26:36	23.10.2020

Sensor simple to handle and gives direct reading on surface display.



Angle sensor

Screens (not all are shown)

INTRO 0 / 0

DEPTH MEASUREMENT SYSTEM

- Atmospheric sensor (inside MOSS)
- NAP reference sensor at shallow depth
- Pressure sensor at depth
- Water density probe (seperate unit)
- Online calculation of (NAP) depth
- Display of angle sensor

11:23:07 03.08.2020

DENSITY 0 / 0

Use density probe to determine value and set density.

DENSITY 0 kg/m3

Press A : Increase value (max 1030)
 Press B : Decrease value (min 990)

11:24:20 03.08.2020

A B

OVERVIEW 0 / 0

	mbar	°C
1: Atmospheric sensor	0.0	0.00
2: NAP reference sensor	0.0	0.00
3: Absolute sensor	0.0	0.00
4: Density	0.0	kg/m3
5: Angle	0.00	deg
		cm
Difference sensor 3-2	0.0	0.0

10:29:28 23.10.2020

DEPTH MEASUREMENT 0 / 0

Atm 0 NAP 0 Abs 0 Dens 0

NAP LEVEL

0.00

Depth under water 0.00

10:26:36 23.10.2020

ANGLE MEASUREMENT 0 / 0

ANGLE X [deg]

0.00

ANGLE Y [deg] 0.00

10:32:54 23.10.2020

Optional screens

DIVE LOG 0 / 0

Start time 00 : 00 : 00

Dive time

00 : 00 : 00

Current Depth 0.00 m

Stop time 00 : 00 : 00

13:59:12 21.06.2021

clear

Set time and date

Set date
21.06.2021

Set time
14:02:42

↑/+ ↓/- ← Esc

When MOSS unit is on all data is stored on the USB stick

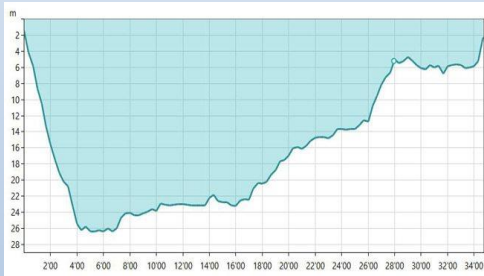


USB stick is placed on the frontplate.

TARKA logo can be replaced by company logo if requested.

With the stored data it is possible to create dive-profiles.

Up till now this is done by client but optional to create a software tool on laptop to generate dive-logs.



MOSS DEPTH system can be purchased but also rented

FEEDBACK:

- Easy to install
- Easy to operate
- Direct readings on clear screens
- Very accurate
- Very good that depth and angle sensor can be used together
- No additional cables are needed when used on umbilical

SYSTEM IS USED BY :

